



HUMAN
SERVICES
DEPARTMENT



COVID-19 DAY 233 PRESS UPDATE

OCTOBER 29, 2020

SECRETARY DAVID R. SCRASE, M.D.

INVESTING FOR TOMORROW, DELIVERING TODAY.

AGENDA

- Science & Media Update
- Hospital Update
- NM COVID-19 Update
- Public Health Reopening Gating Criteria for New Mexico

Special Guests

Dr. Jason Mitchell, Chief Medical Officer, Presbyterian
Healthcare Services

Dr. David Gonzales, Chief Medical Officer, CHRISTUS St. Vincent

COVID-19 SCIENCE & MEDIA UPDATE

2.5 MILLION PERSON-YEARS OF LIFE HAVE BEEN LOST DUE TO COVID-19 IN THE UNITED STATES PREPRINT

- Researchers performed calculations of person-years of life lost as a result of 194,000 premature deaths due to SARS-CoV-2 infection as of early October, 2020.
- Researchers estimate over 2,500,000 person-years of life have been lost so far in the pandemic in the US alone, averaging over 13.25 years per person with differences noted between males and females.
 - Nearly half of potential years of life lost occur in non-elderly populations.

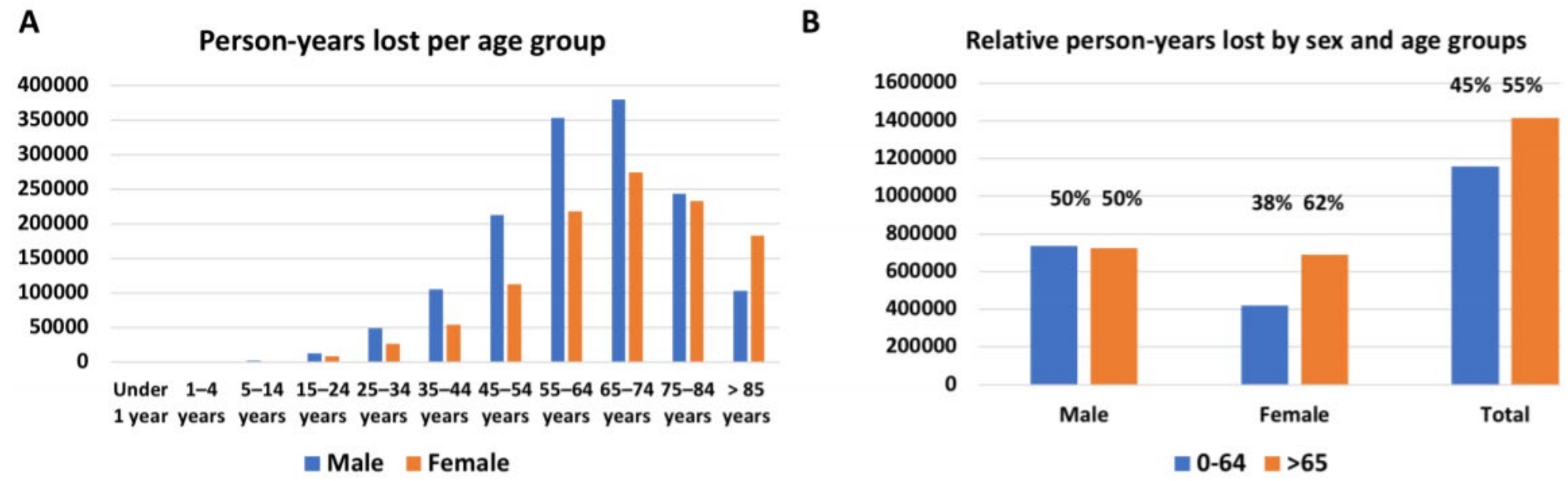


Figure 2. PYLL distribution by sex and age. (A) Person-year lost by age. (B) PYLL by sex.

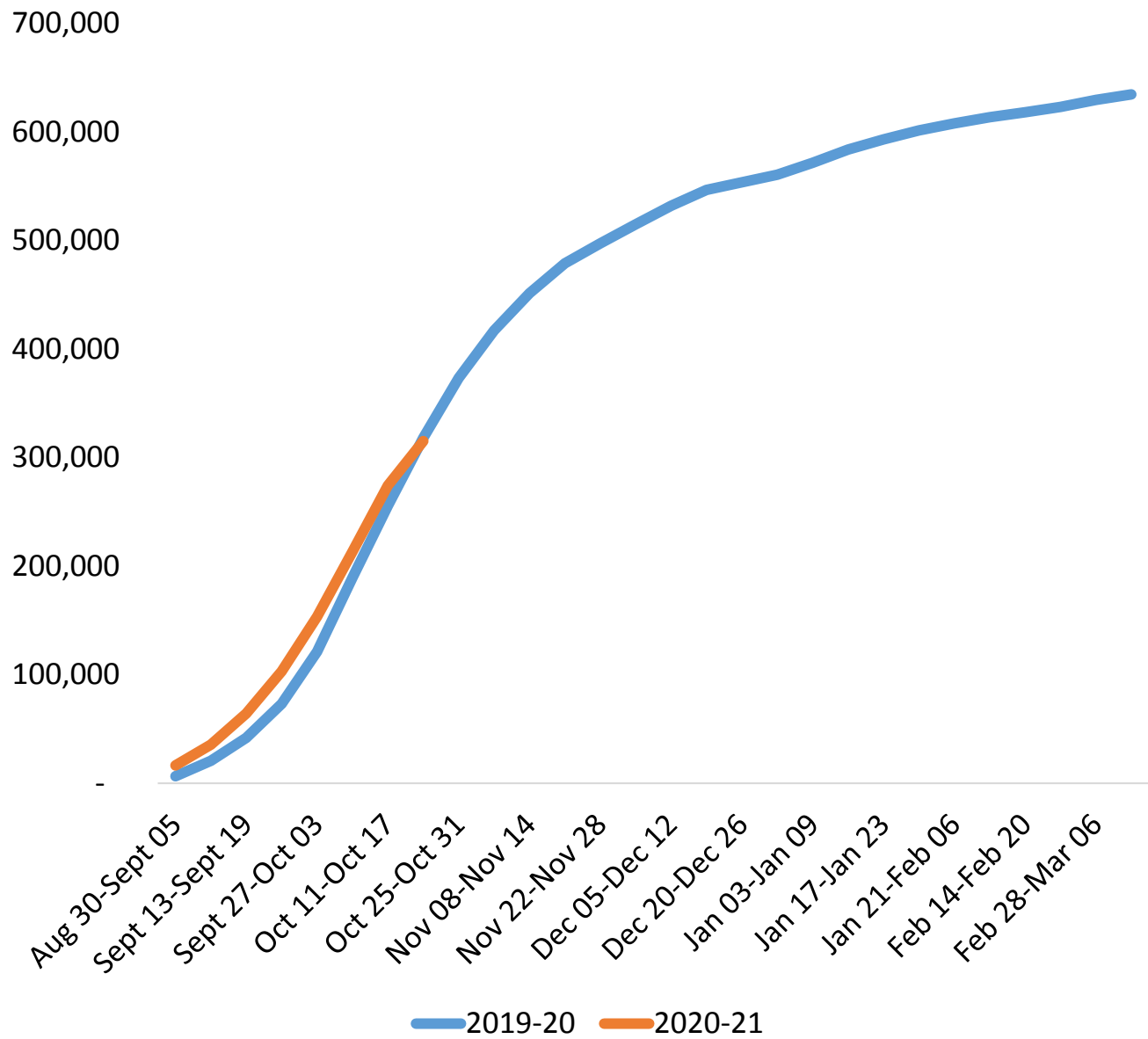
NM Adult & Child Flu Vaccines Administered, Cumulative Totals, 2019-2020 & 2020-2021 Flu Seasons

THE FLU SEASON IS HERE.

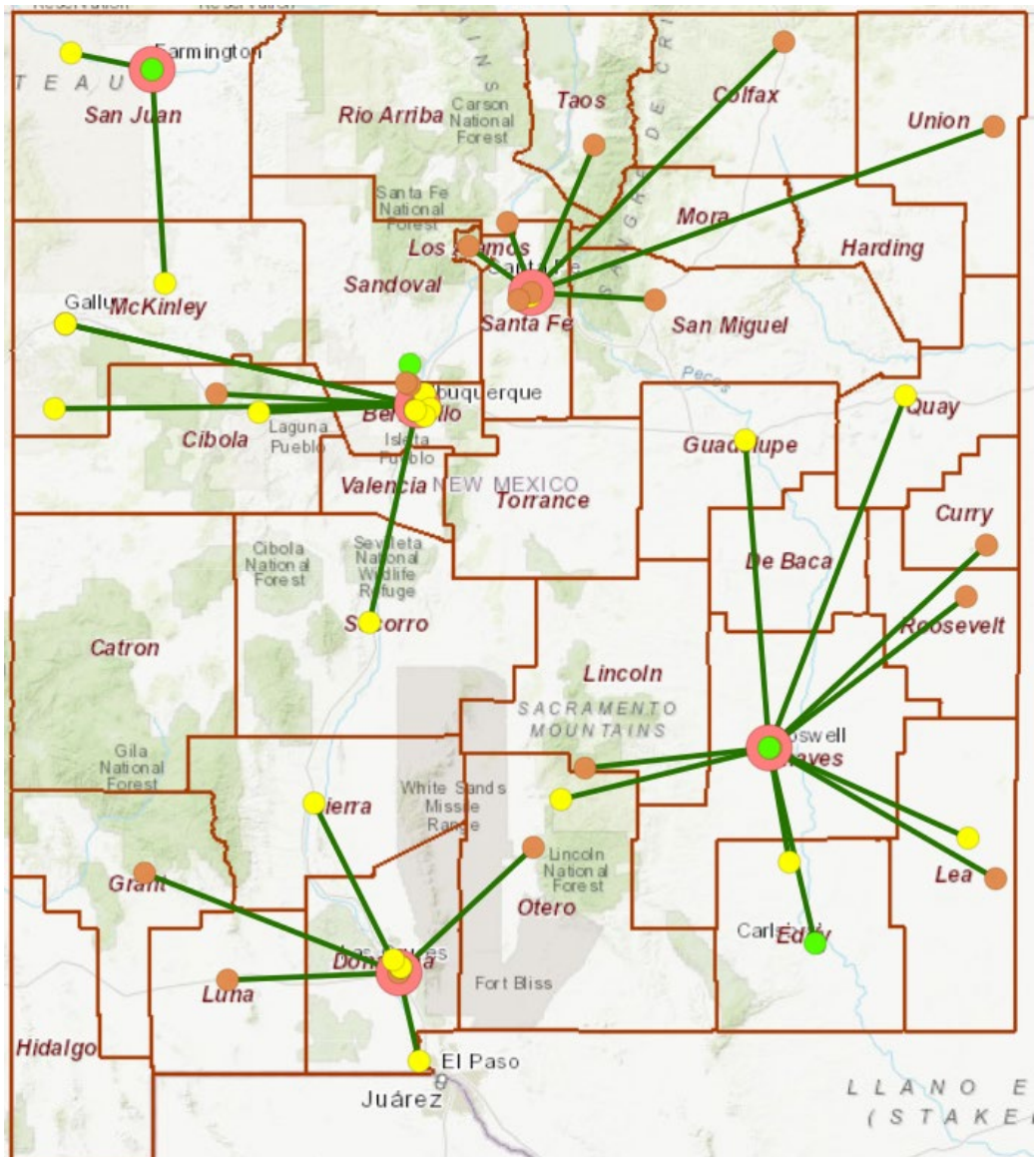
MAKE A PLAN TO GET YOUR FLU SHOT TODAY.

TOGETHER
NEW MEXICO
HEALTH **NM**

GET A FLU SHOT **TOGETHERNM.ORG**



NEW MEXICO'S HOSPITAL HUB & SPOKE TRANSFER SYSTEM HELPS PRESERVES CAPACITY



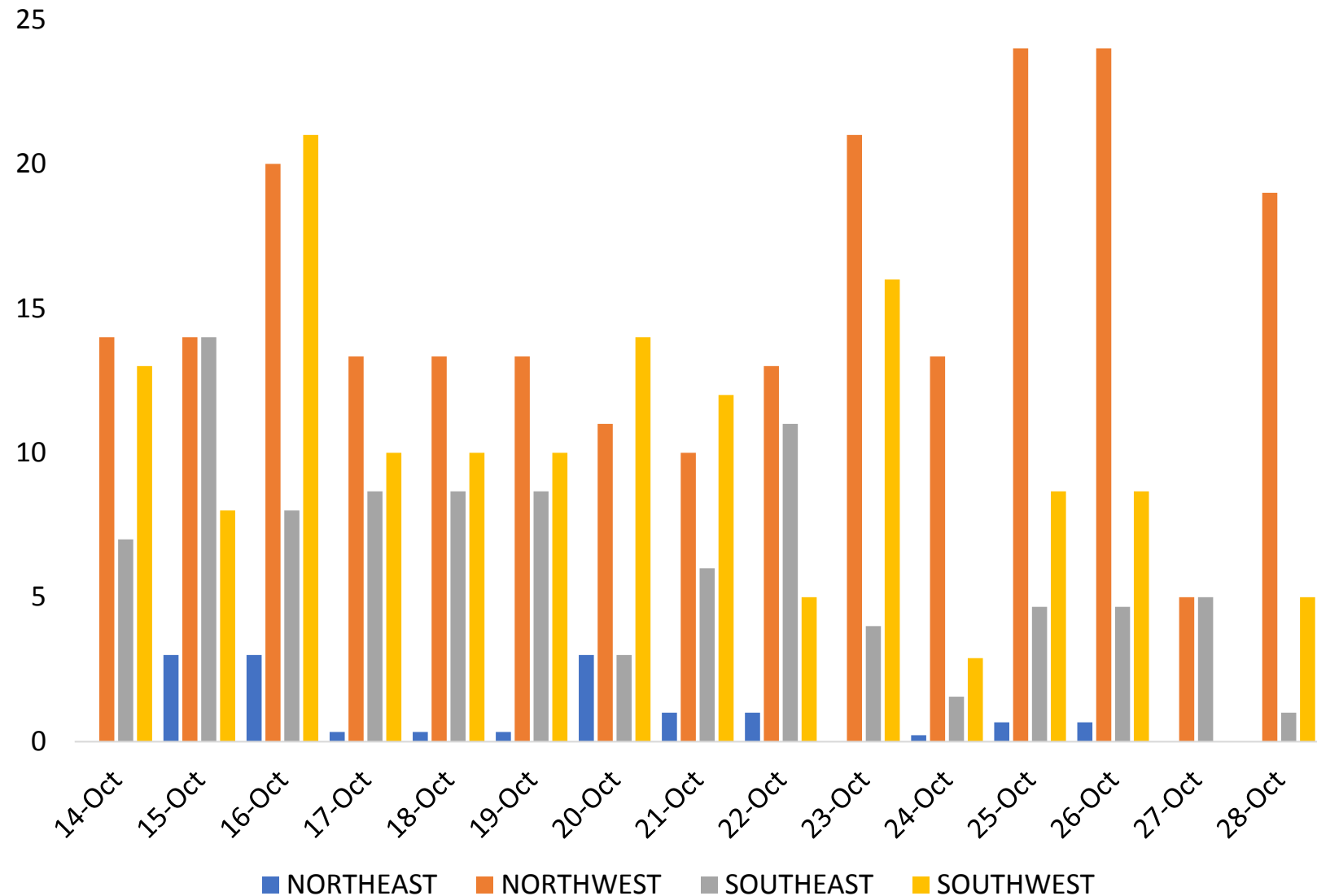
NM Hub & Spoke Legend

ICU	Hub Hospital/Region
51 - 90	
26 - 50	
11 - 25	
1 - 10	
0	
	Transportation (Spoke-to-Hub)

NM HOSPITAL TRANSFERS

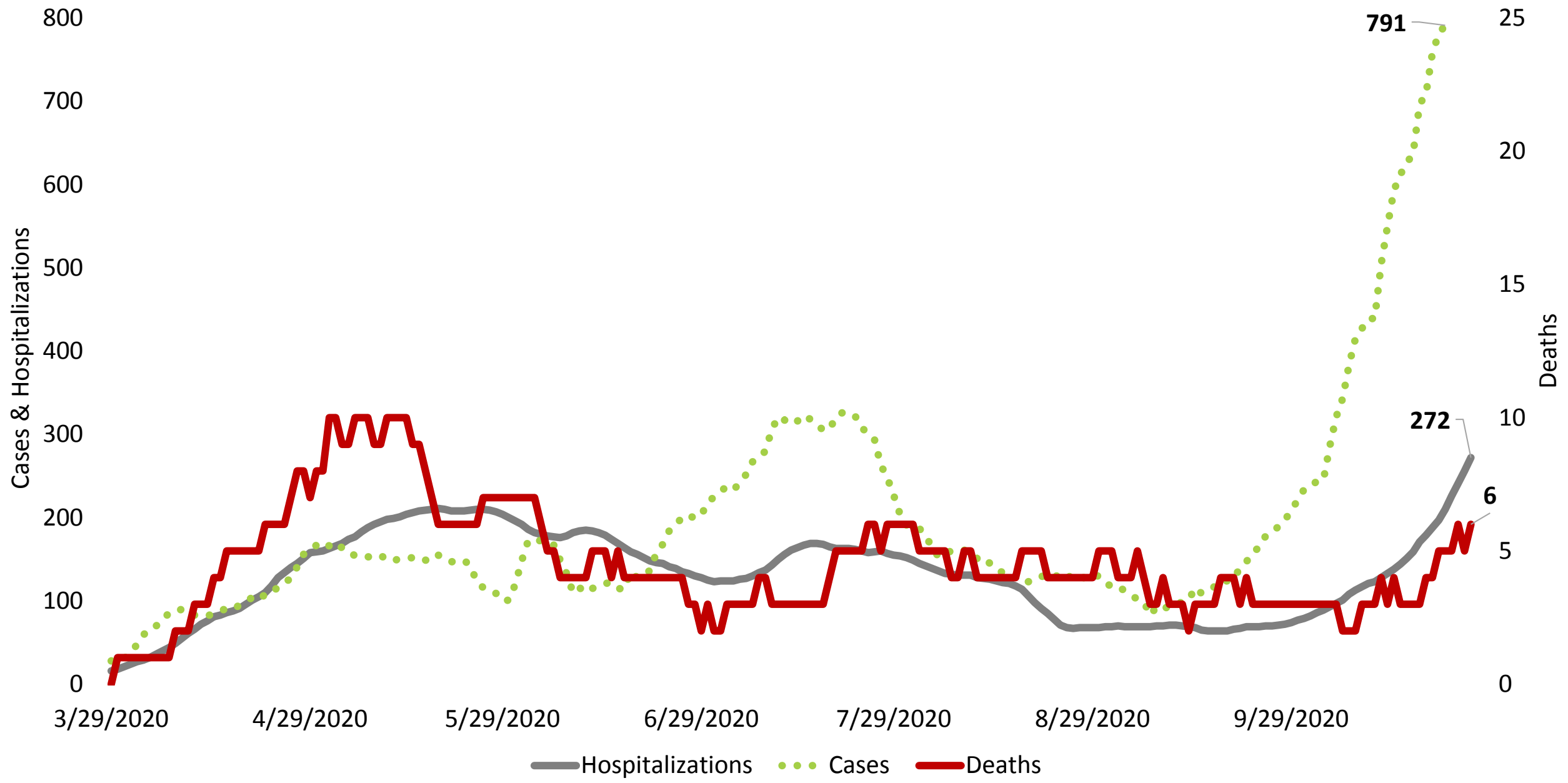
- 482 total transfers last two weeks
- COVID-19 patients 24.1% (116) of total transfers

Patients Transferred, NMDOH Region of Origin,
10/14/2020 - 10/28/2020

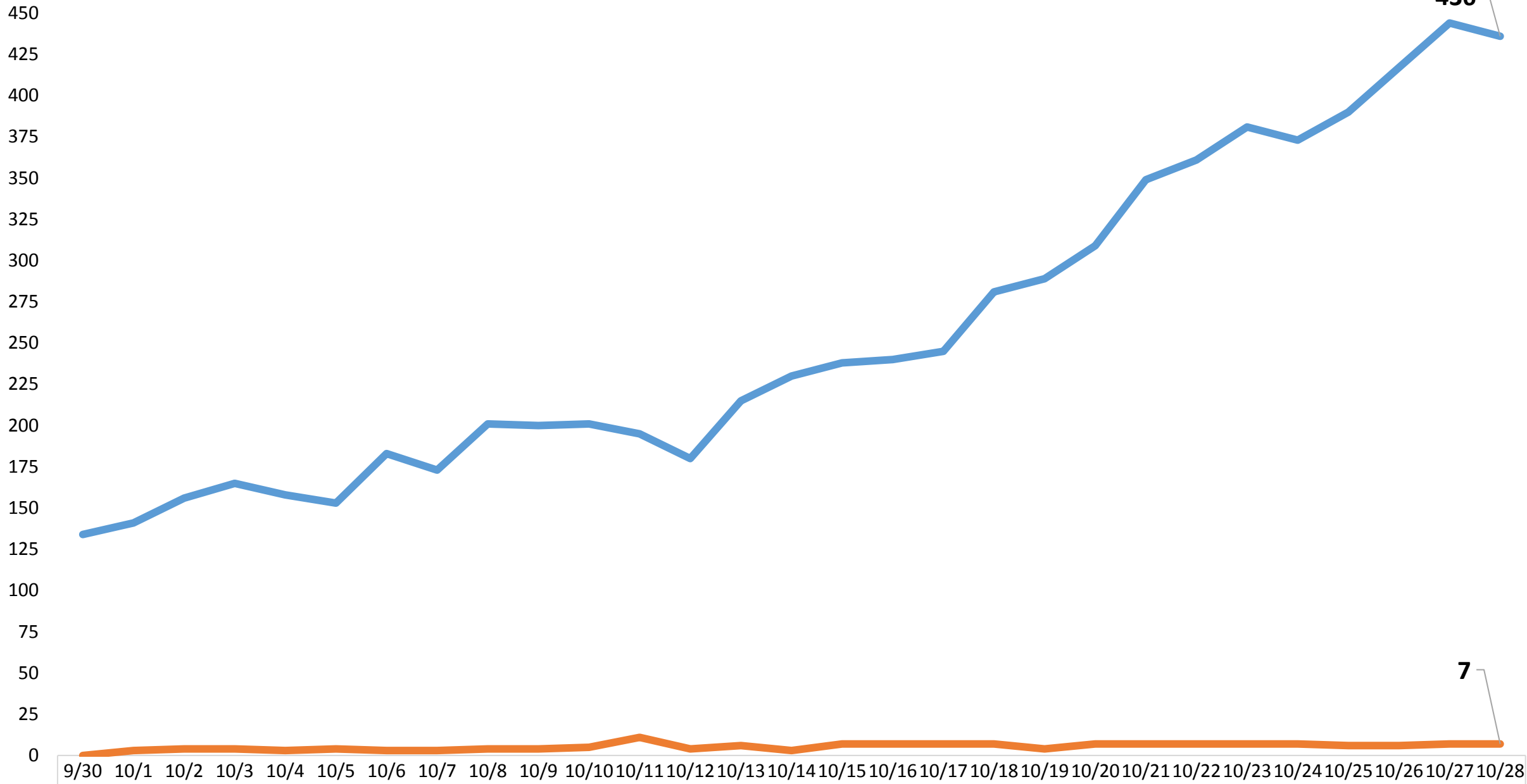


NM COVID-19 Daily Cases by Specimen Collection Date, Hospitalizations, and Deaths

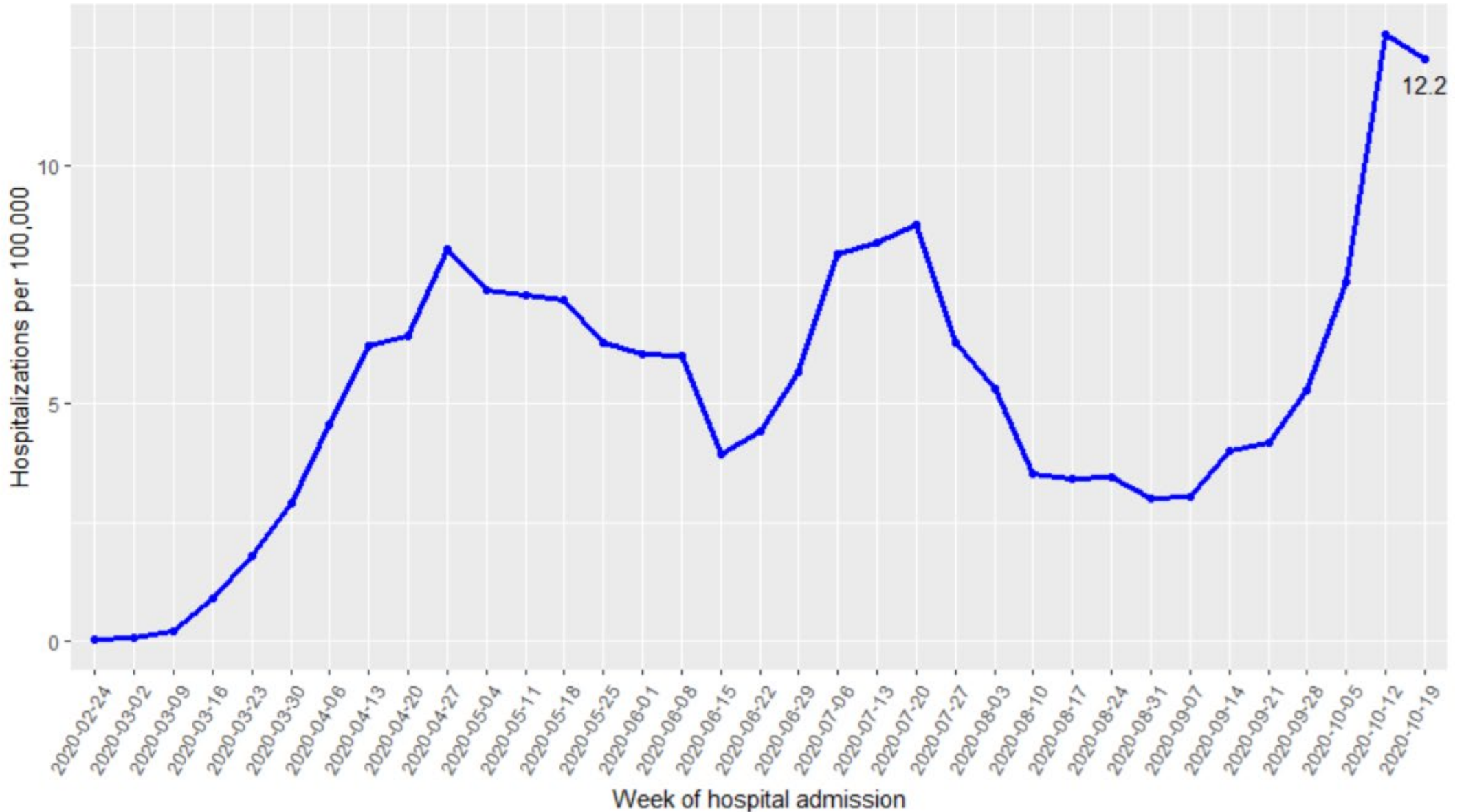
7 Day Rolling Average



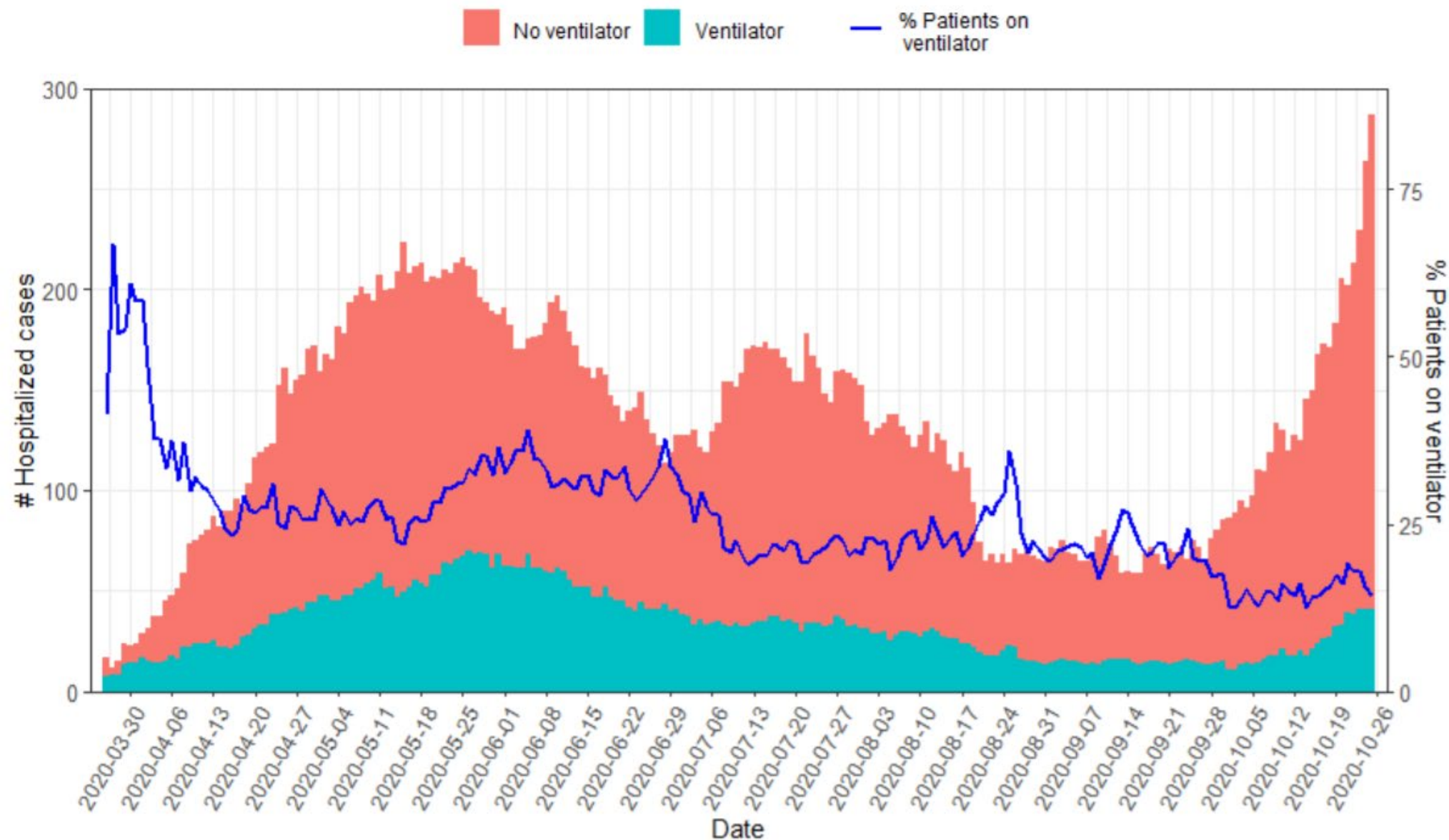
NM Suspected/Confirmed COVID Patients seeking Care in a Hospital Setting



	9/30	10/1	10/2	10/3	10/4	10/5	10/6	10/7	10/8	10/9	10/10	10/11	10/12	10/13	10/14	10/15	10/16	10/17	10/18	10/19	10/20	10/21	10/22	10/23	10/24	10/25	10/26	10/27	10/28
Adult	134	141	156	165	158	153	183	173	201	200	201	195	180	215	230	238	240	245	281	289	309	349	361	381	373	390	417	444	436
Pediatrics	0	3	4	4	3	4	3	3	4	4	5	11	4	6	3	7	7	7	7	4	7	7	7	7	7	6	6	7	7



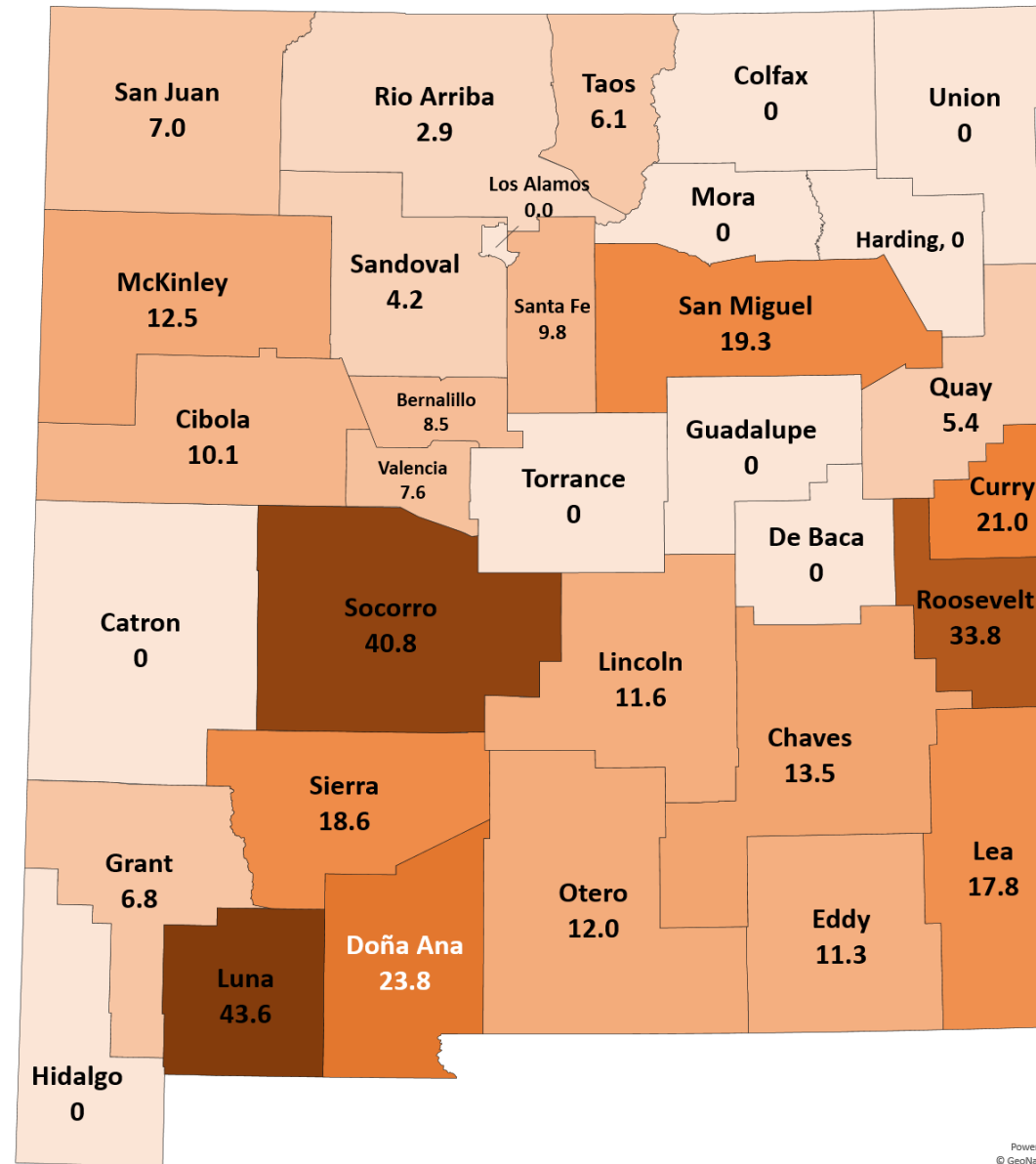
58 cases with missing hospital admission dates were excluded. Hospital admissions during the week of 10/19/2020 may not yet be reported.



https://cv.nmhealth.org/wp-content/uploads/2020/10/hospitalizations_covid19_public-report_10.26.20_final.pdf

The daily number of hospitalizations includes patients who are ICE detainees. For each day, the number of hospitalized patients is separated into those who are on ventilators (green bars) and those patients who are not on ventilators (red bars). The blue line indicates the percentage of daily hospitalized patients on ventilator each day.

New Age-Adjusted Hospital Admissions per 100,000 Population by County (10/19- 10/25)



Powered by Bing
© GeoNames, HERE

Source: NM Department of Health. Hospital admissions during the week of 10/19/2020 may not yet be reported.
https://cv.nmhealth.org/wp-content/uploads/2020/10/hospitalizations_covid19_public-report_10.26.20_final.pdf

Managing the COVID-19 pandemic at Christus St. Vincent

Caring for our community

Dr. David Gonzales, Chief Medical Officer



Team Based Care Model

- Hospitalist Physicians
 - Serve as Attending/Admitting Physicians
- Intensivists
 - Primarily consultants
 - Responsible for Ventilator Management
- ICU/Med-Surg Nurses
 - Collaboration enables team to care for more patients
- Respiratory Therapists
 - Experts on Non-invasive ventilation, high flow oxygen, and assist with mechanical ventilation as well as provide respiratory therapy.



Cohorting Patients on a Covid-19 Unit

- All levels of care delivered to Covid patients in single ward
- Dedicated staff to care for Covid patients
- Has enabled us to keep the rest of the hospital “Covid free”
- Able to be good stewards of Personal Protective Equipment
 - Less daily use of PPE
 - N-95 Mask Sterilization
 - “Donning & Doffing” assistants upon entry and exiting the unit provides an extra measure of safety
- Daily Virtual Rounds
 - Multidisciplinary rounds via ZOOM enable discussion on all Covid patients by Pharmacy, I.D., Case Management, Patient Family Action Team, Doctors, Nurses, RT’s and administration



Peer Based Review Team

- Created March 2020
- Multidisciplinary team of Physicians that meet daily since March
- Plays a large role in educating our organization and Medical Staff and providing 24/7 internal advice line
- Agenda items include
 - Reviewing the ever changing guidelines concerning Covid
 - Develop Policies and Procedures on:
 - employee screening
 - patient testing for inpatient and outpatient
 - Therapeutics and their usage
 - Visitation
 - PPE usage guidelines for all staff and patients as well as monitoring of supplies
 - Patient screening in the hospital



Screening and Testing

- Indoor drive thru respiratory collection site
- All admissions to our hospital are screened and tested for Covid-19
- Elective procedures are screened and tested – judicious use of PPE
- Coming very soon – Testing for 4 common winter illnesses (COVID-19, RSV, Influenzas A & B)
- Antigen testing for our outpatient clinic patients



What+does+all+of+this+add+up+to?

- SAFETY
- SAFETY
- SAFETY
- At this point and time:
 - Avoiding large gatherings
 - Social distancing
 - Hand Washing
 - Mask Wearing
- ROUTINE MEDICAL CARE
 - NM experience with first wave
 - Hospitals and Doctor's offices are safe
 - Don't postpone routine medical care

Hospital Capacity

Preparing to meet the community's need



*Dr. Jason Mitchell, Chief Medical Officer,
Presbyterian Healthcare Services*

What Does Hospital Capacity Mean?

ICU Baseline: Across the state, we have 290 available ICU beds for COVID-19 patients.

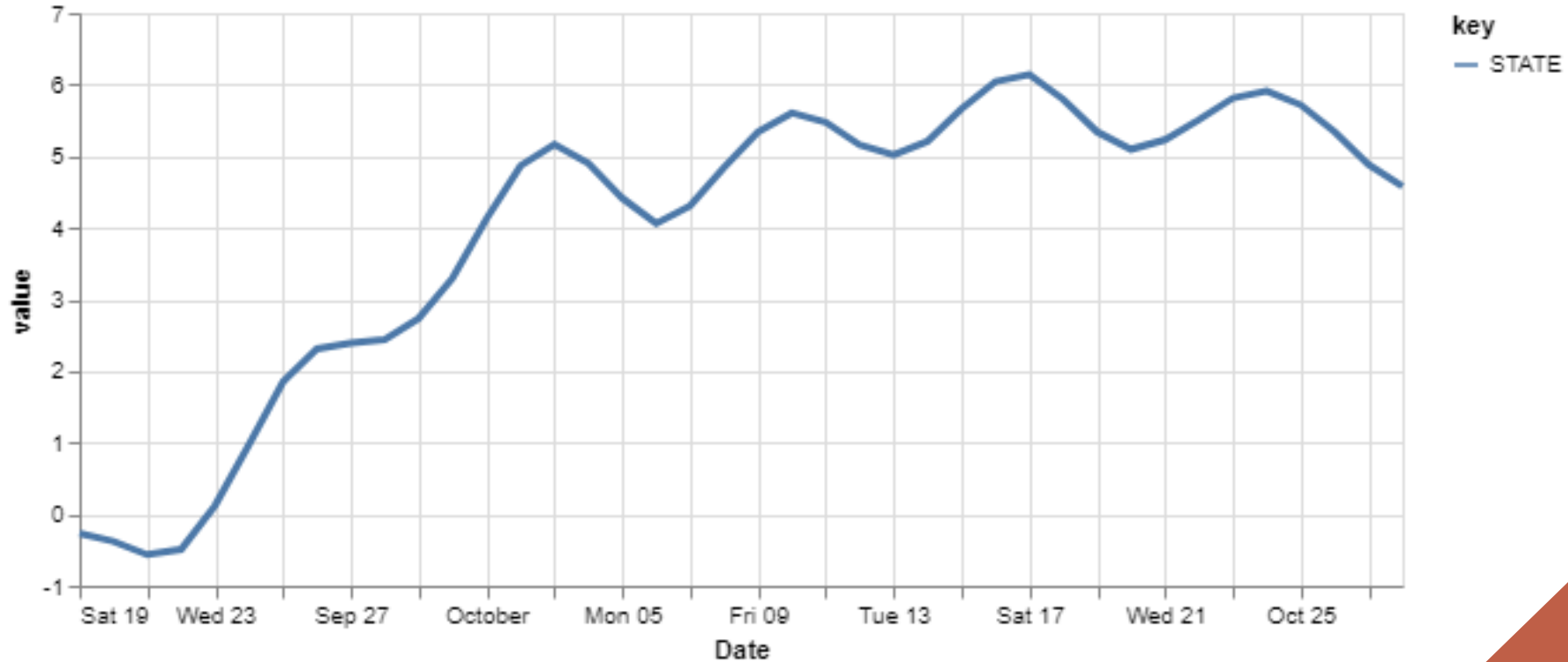
ICU Contingency: Hospitals can expand to 439 ICU beds for COVID-19 by closing all other areas.

ICU Crisis: NM Hospitals can expand to 623 ICU beds through drastic measures.



Current Growth rates are unsustainable

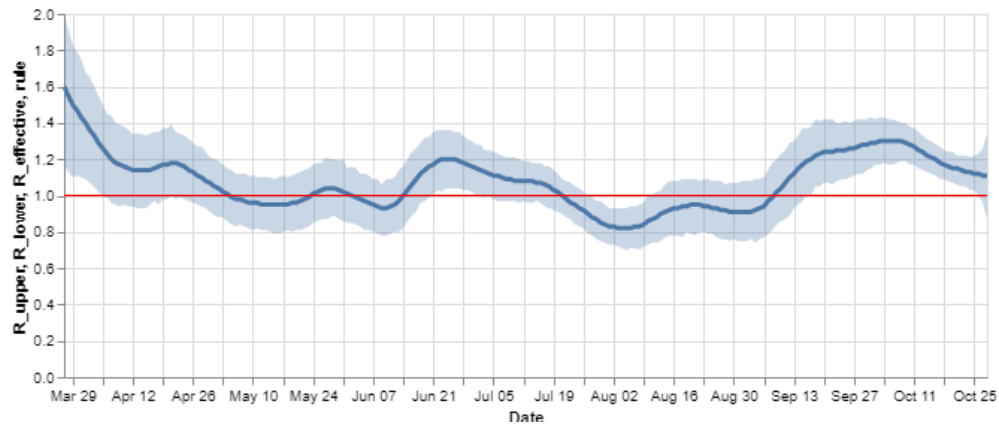
28-day relative growth rate (%), State



As we have more cases - even low growth rates lead to high number of New Mexicans impacted

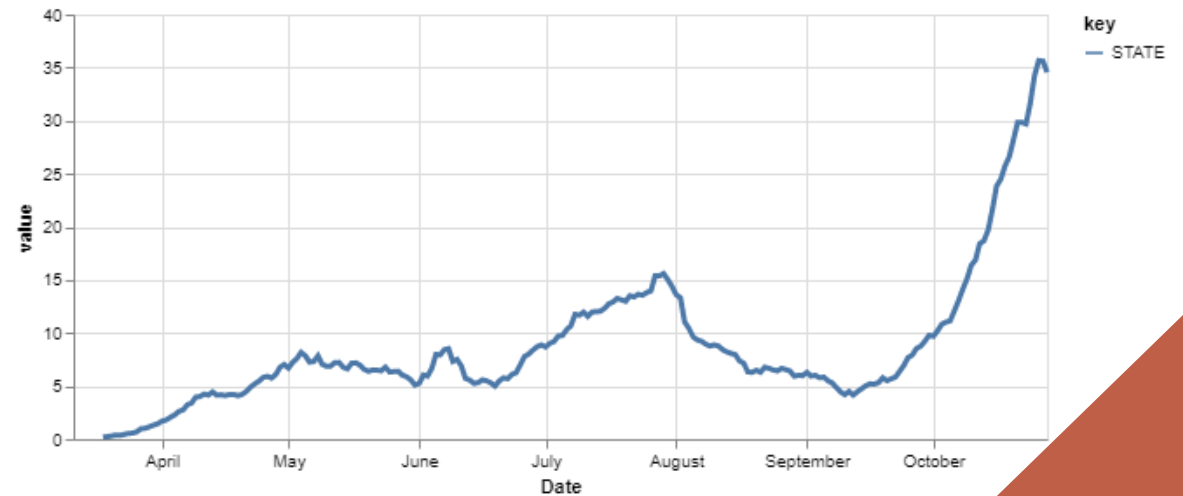
Diagnostics: R_effective

R_effective over time, STATE

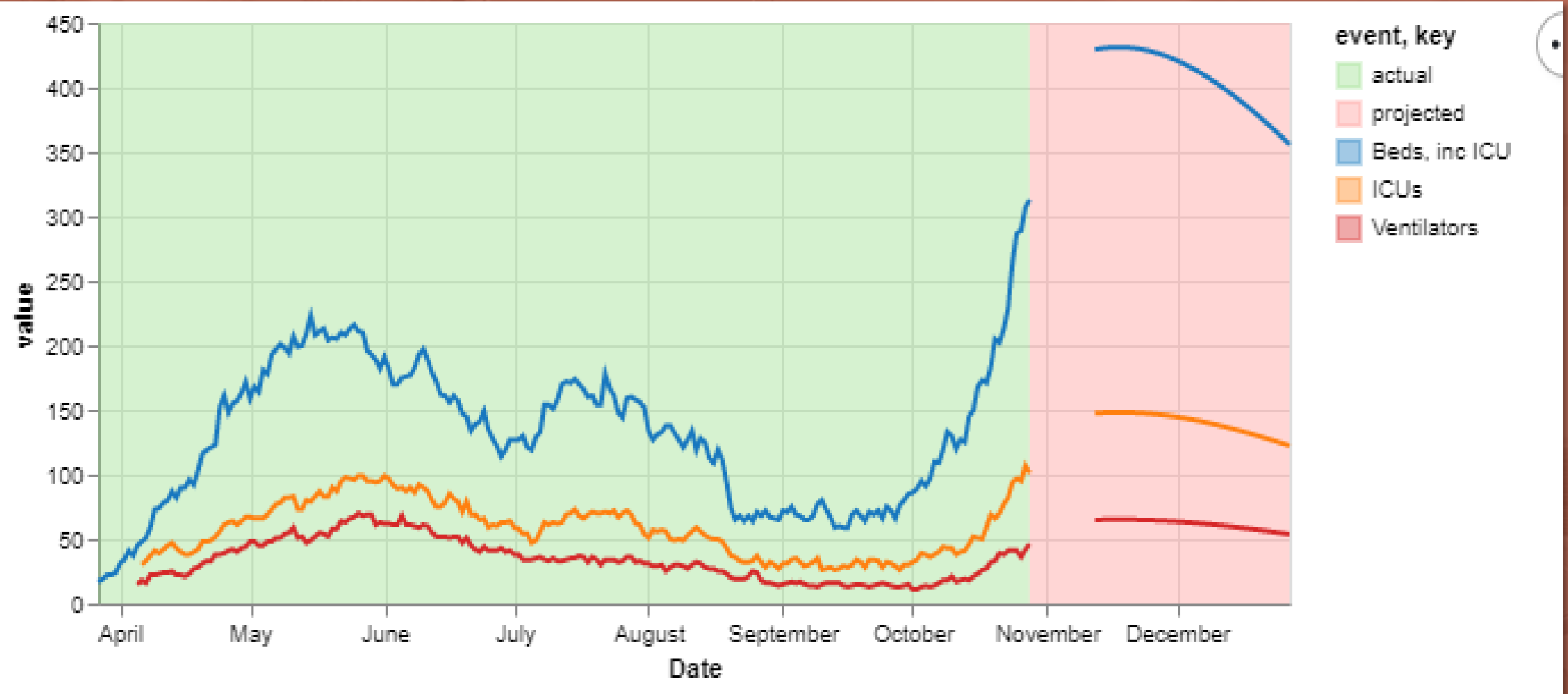


7-day rolling average of new daily cases, State

(cases per 100k population)

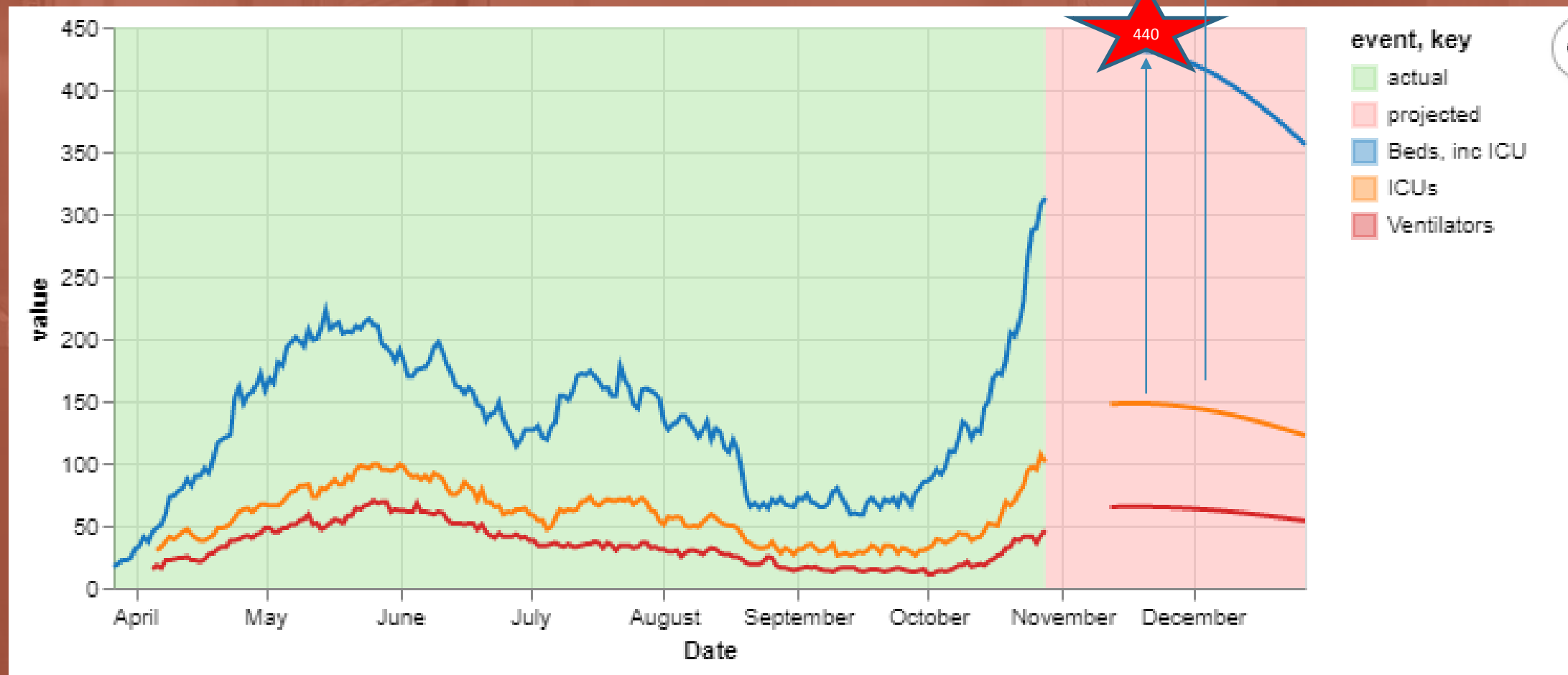


Hospital Capacity: Where we are today

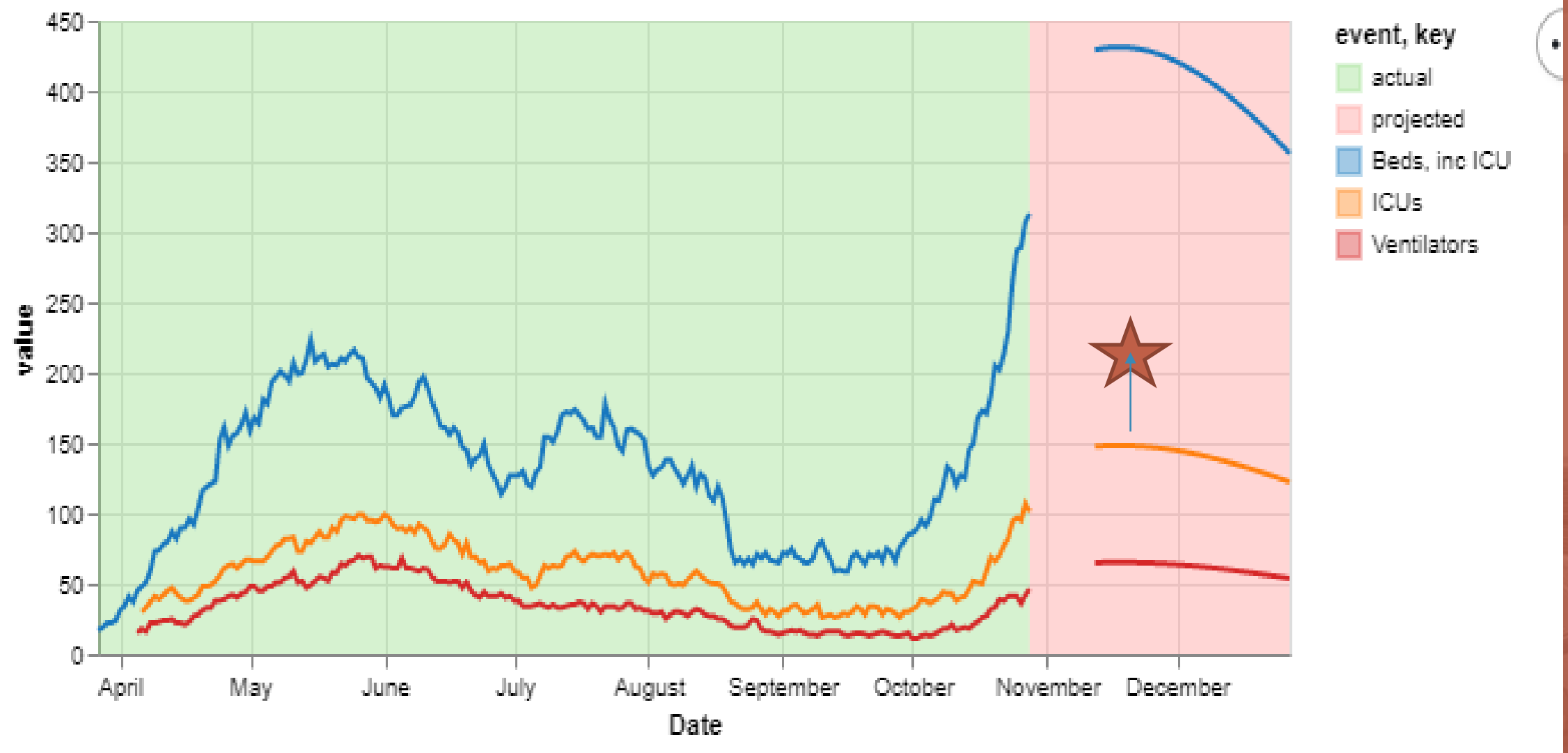


Hospital Capacity: Where we are headed

IF we continue on the trend that began in August without mitigation we will exceed contingency COVID-19 beds in mid November and exceed our crisis ICU beds in December.



Hospital Capacity: Together we can save lives



Current modeling shows a peak of 215 ICU patients by 11/15 if we dramatically improve COVID-safe practices beginning this week.



How is today different?

- Rarely in modeling do you see such a profound spread in potential outcomes over such a short period of time.
- We are not past the tipping point but upon it. The cumulative actions of our community will determine the outcome in a single month. It will either be catastrophic or an occasion for celebration.
- We know what to do as a community and get to choose.

I'M PROTECTING MY MOM.

Mask up to protect others.

A public service message from & PRESBYTERIAN



I'M PROTECTING MY GRANDMA.

Mask up to protect others.

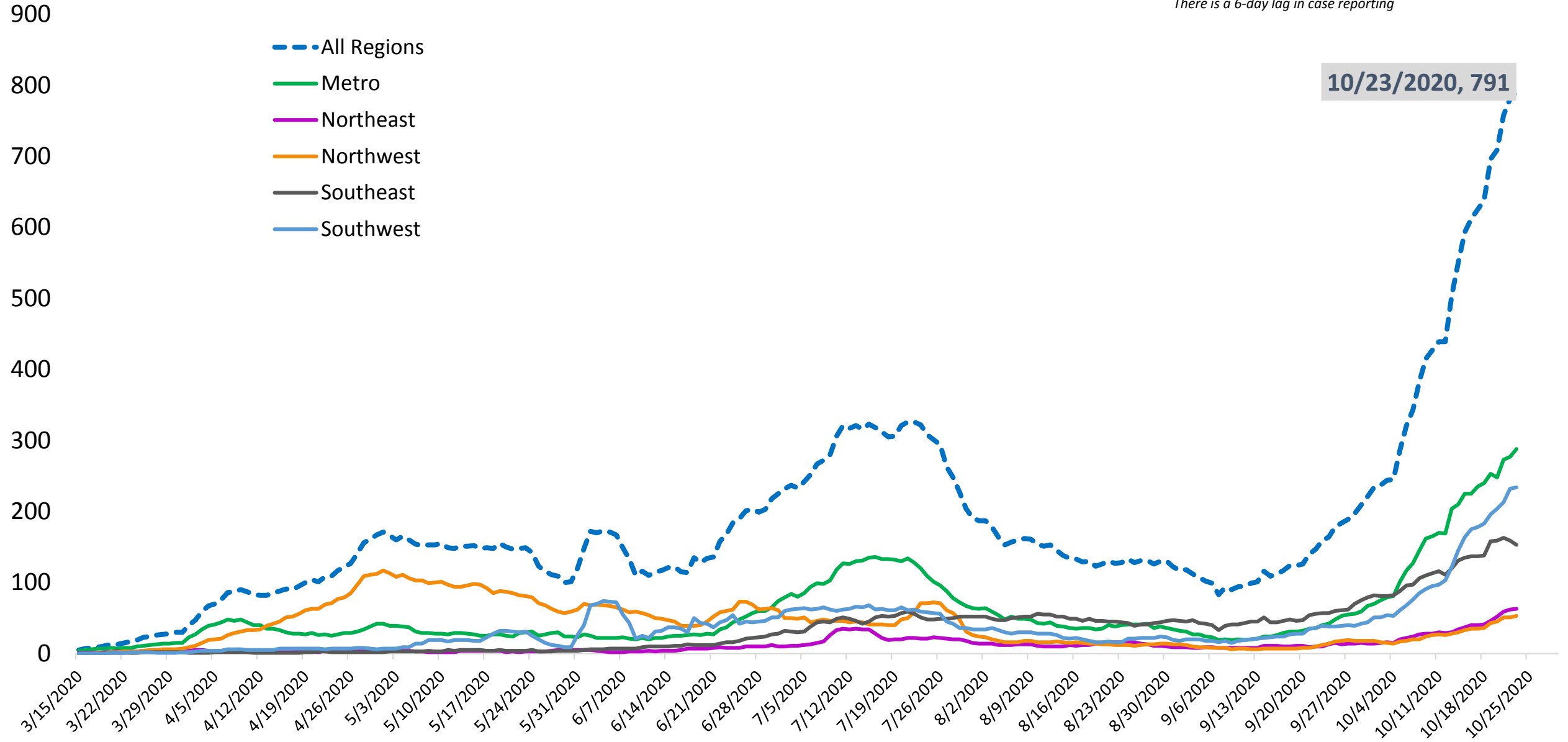
A public service message from & PRESBYTERIAN



COVID-19 IN NM UPDATE

7-Day Average of Daily COVID-19 Positive Cases by Date of Specimen Collection, NMDOH Regions 10/29/2020

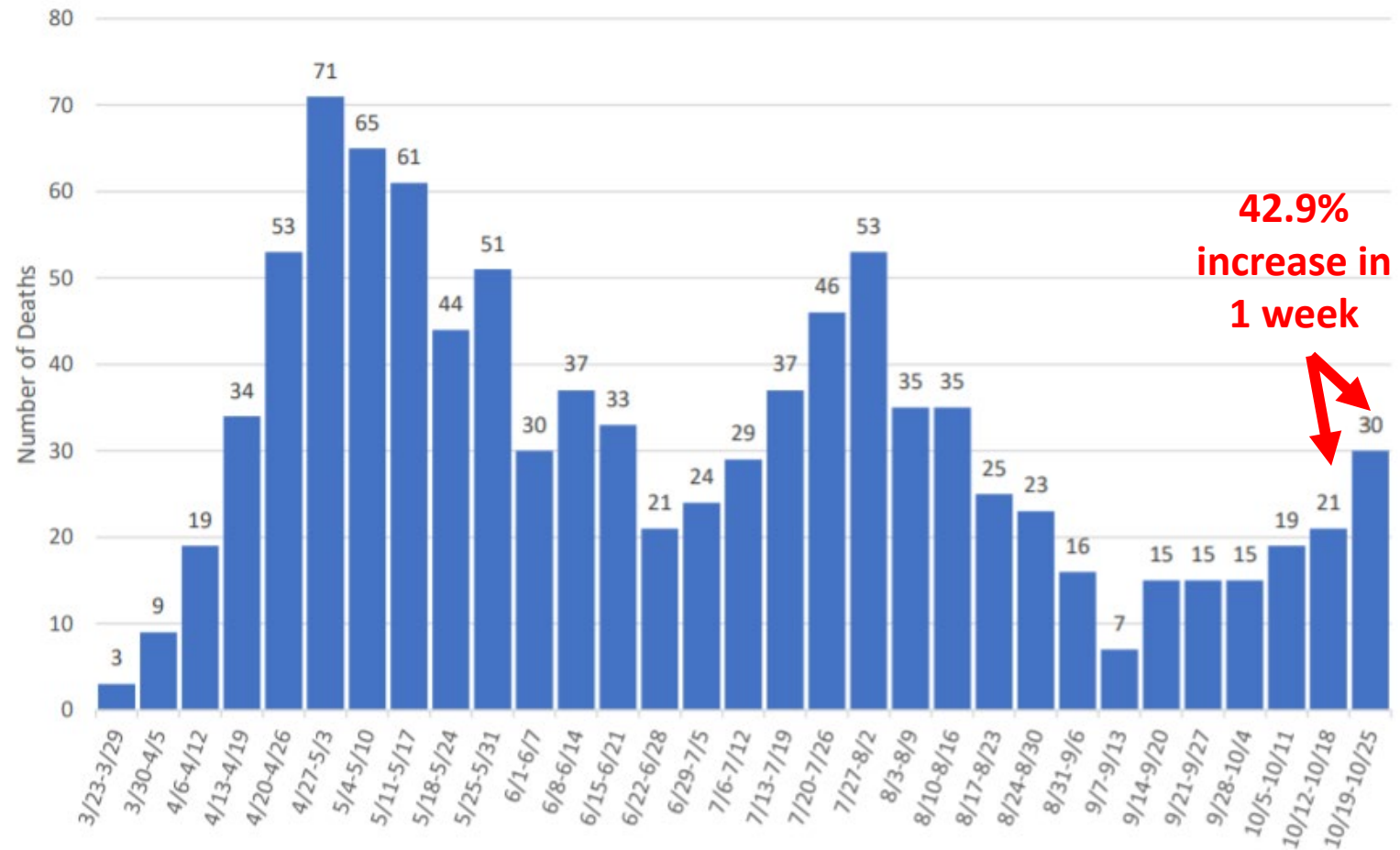
Source: New Mexico Department of Health
There is a 6-day lag in case reporting



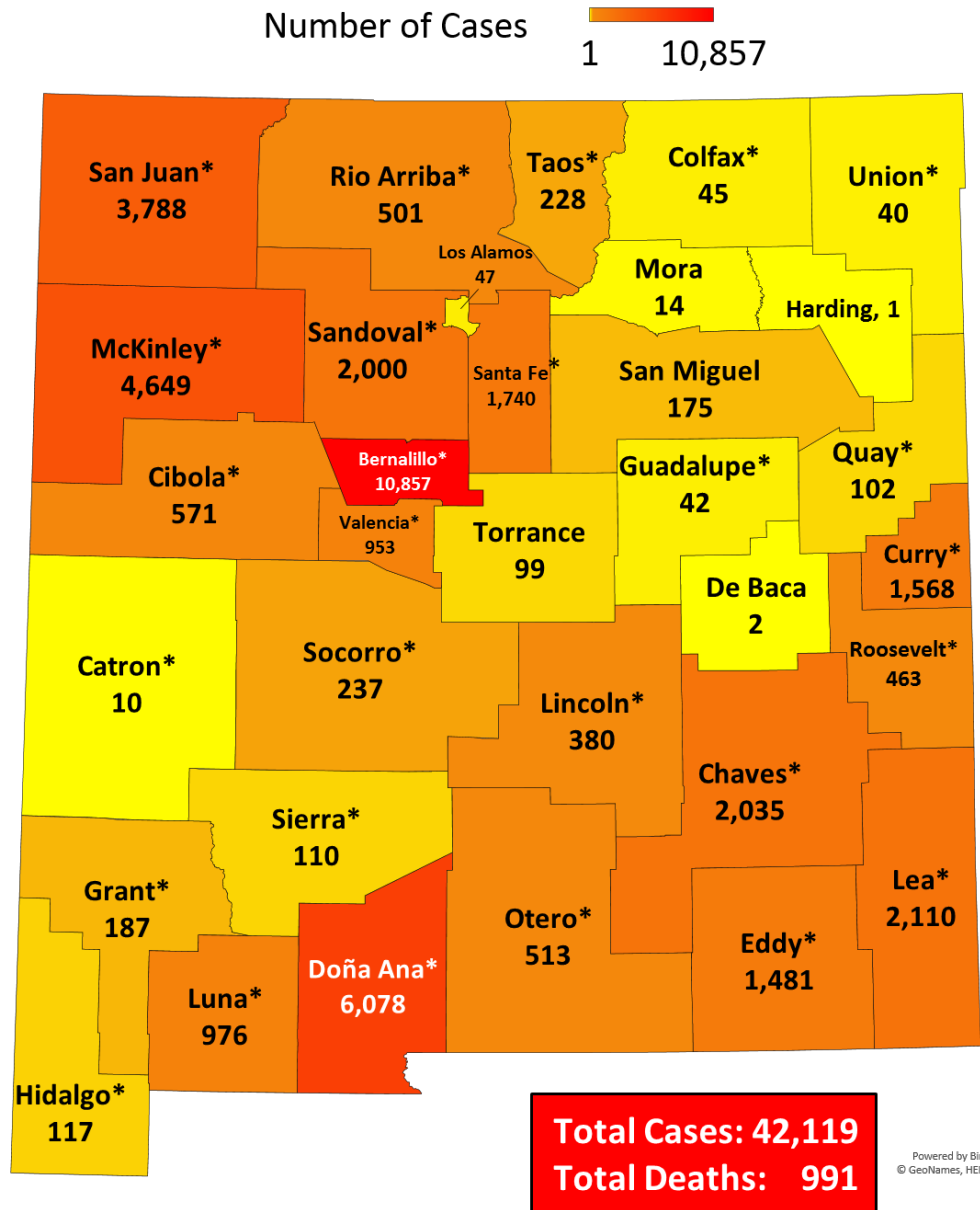
COVID-19 IN NEW MEXICO

- 7-day average of daily confirmed cases rose 15.5% the past 7 days compared to the previous week
- 991 New Mexicans have died
 - Deaths increased 42.9%
- COVID-related hospitalizations rose 52% past 7 days

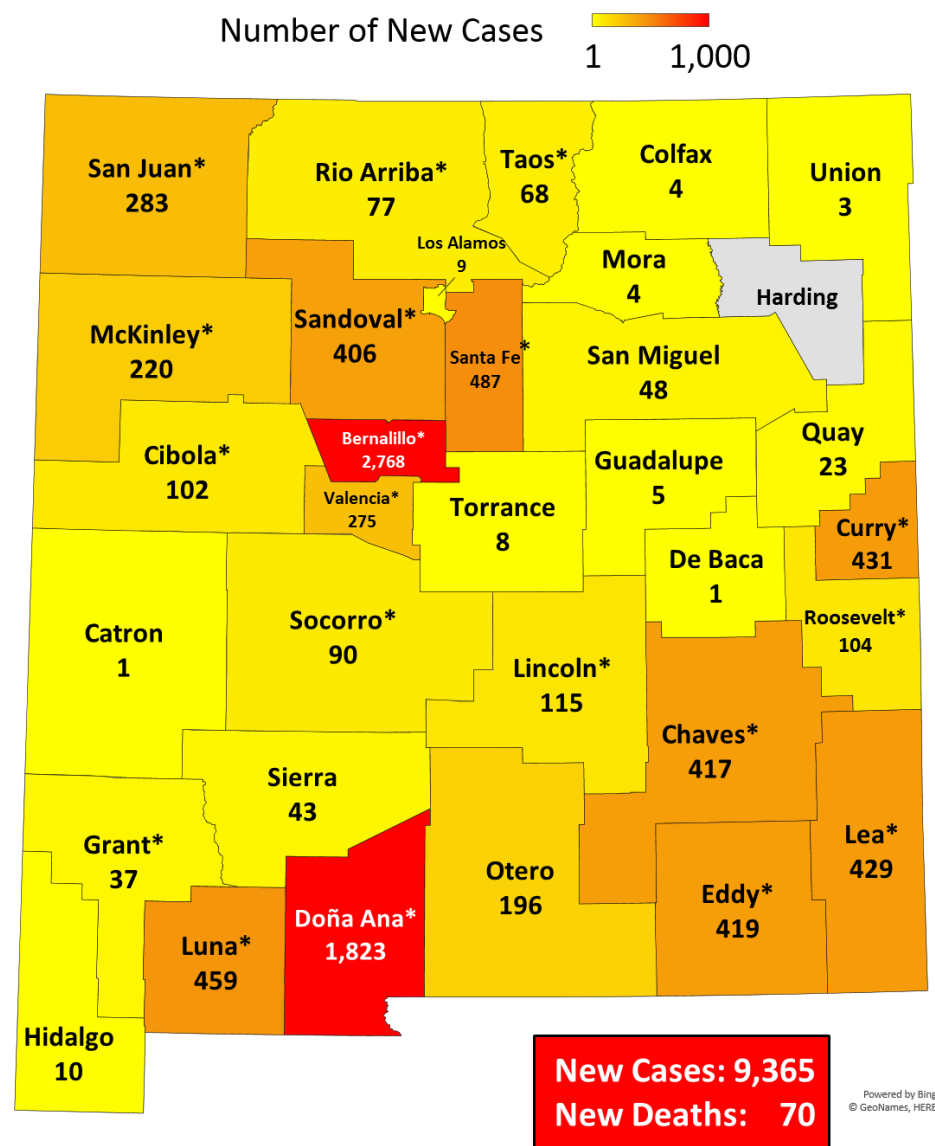
Number of Deaths Each Week



Total COVID-19 Positive Cases (10/28/2020) 14-Day Total of New COVID-19 Positive Cases 31 (10/15 to 10/28)



Source: New Mexico Department of Health. * denotes death occurred in county. Excludes cases in federal and state detention facilities.

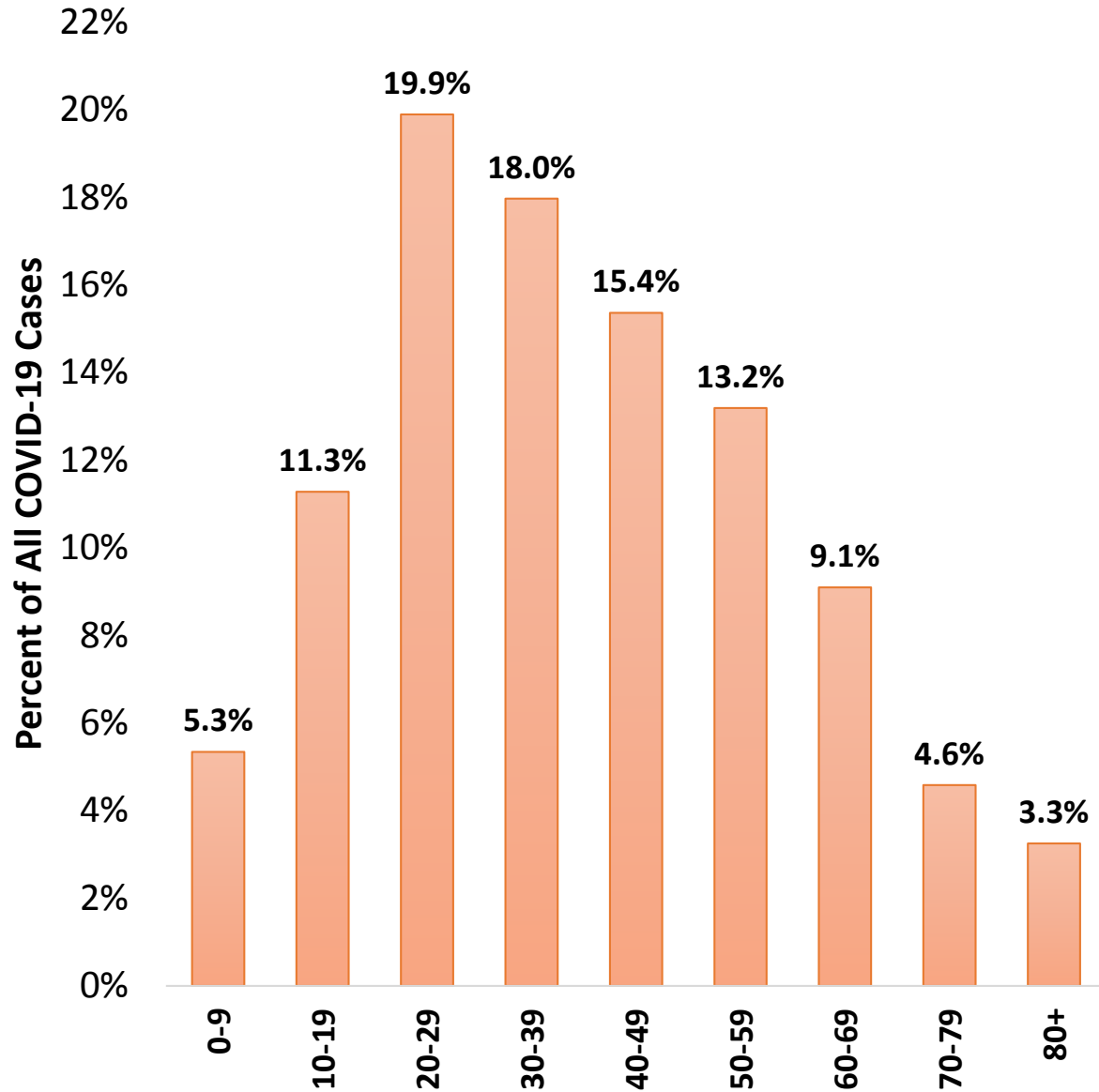


Source: New Mexico Department of Health. * denotes new death occurred in county. Excludes cases in federal and state detention facilities.

NM COVID-19 Confirmed Cases by Age

as of 10/28/20 (%)

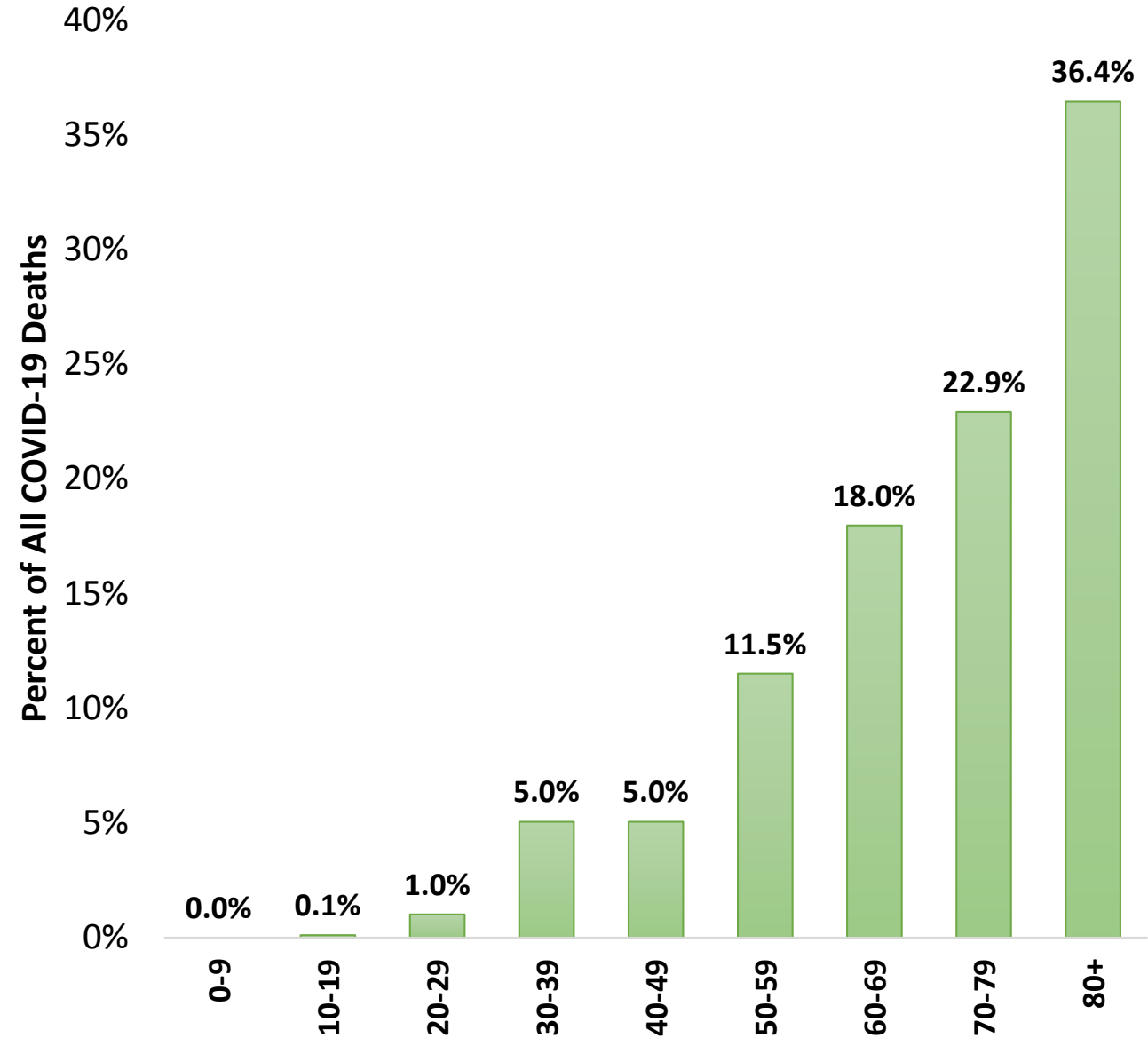
Source: NM Dept. of Health. Excludes unknown age



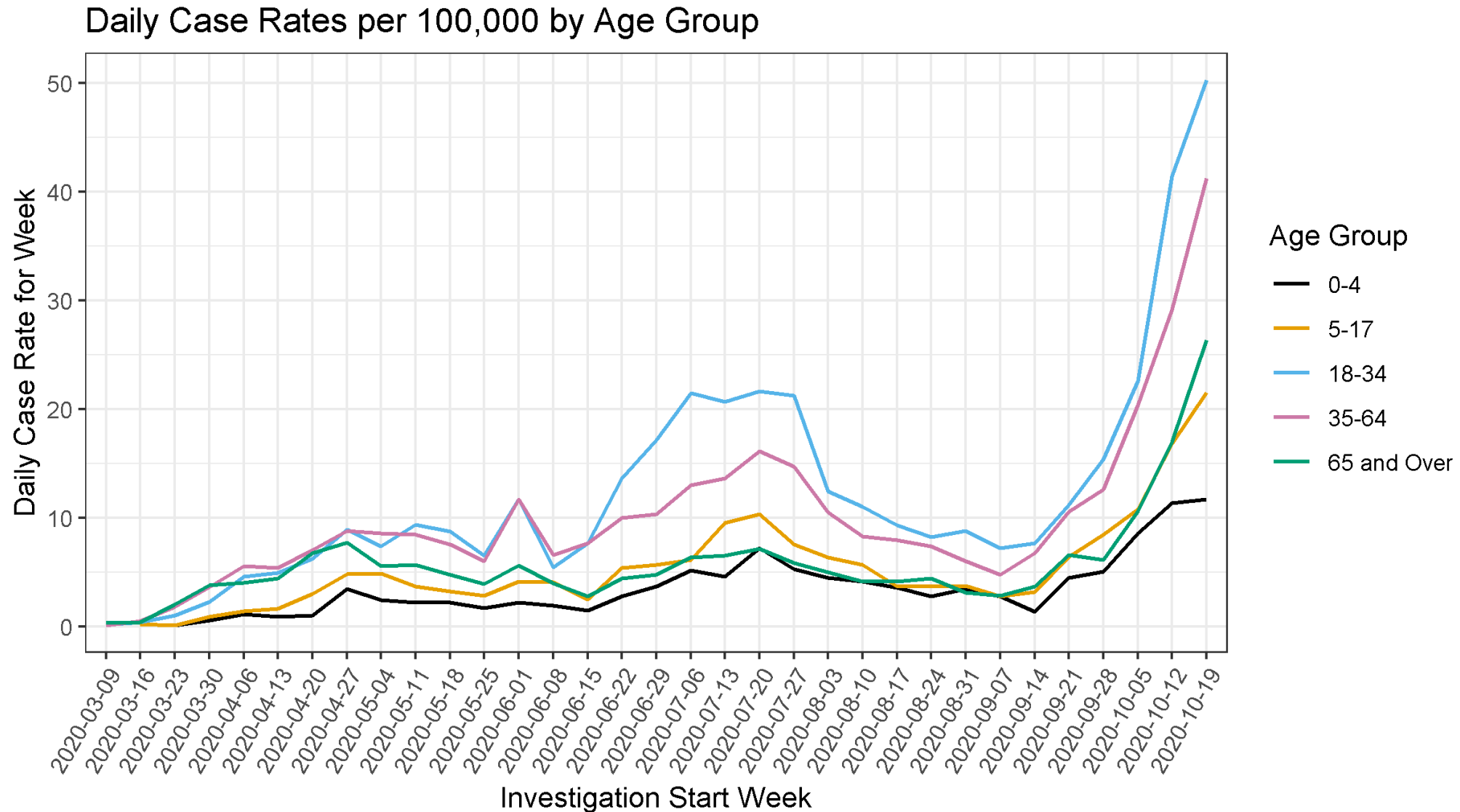
NM COVID-19 Deaths by Age as of

10/28/20 (%)

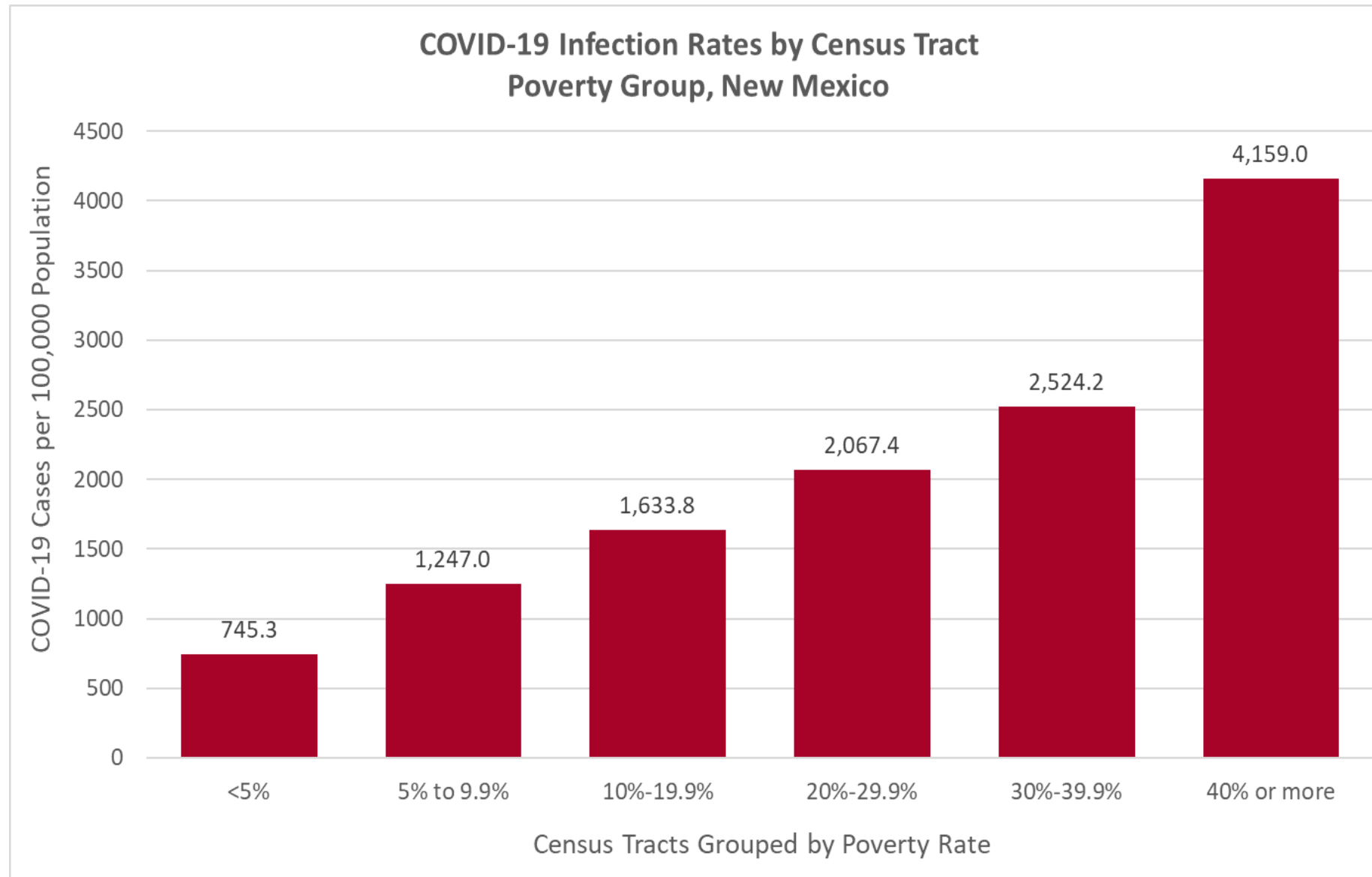
Source: NM Dept. of Health. Excludes unknown age



NM COVID-19 DAILY CASE RATES PER 100,000 BY AGE GROUP



Source: NM Department of Health. Excludes individuals in federal immigration (ICE) facilities, individuals determined to live out of state, and 5 individuals missing age information. October 27, 2020



Sources: COVID-19 Cases, NM Department of Health, NM Electronic Disease Surveillance System, 10/26/2020. Poverty Rates, U.S. Census Bureau, American Community Survey (ACS), 2018 5-yr. estimates. A data issue caused the U.S. Census Bureau to omit data for Rio Arriba County census tracts in the ACS 2018 5-yr. estimates. Data from the 2017 5-yr. estimates were used in this analysis as proxy poverty data for those census tracts.

Mean Miles Traveled in New Mexico

8

7

6

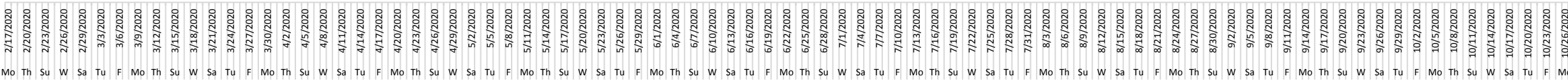
5

4

3

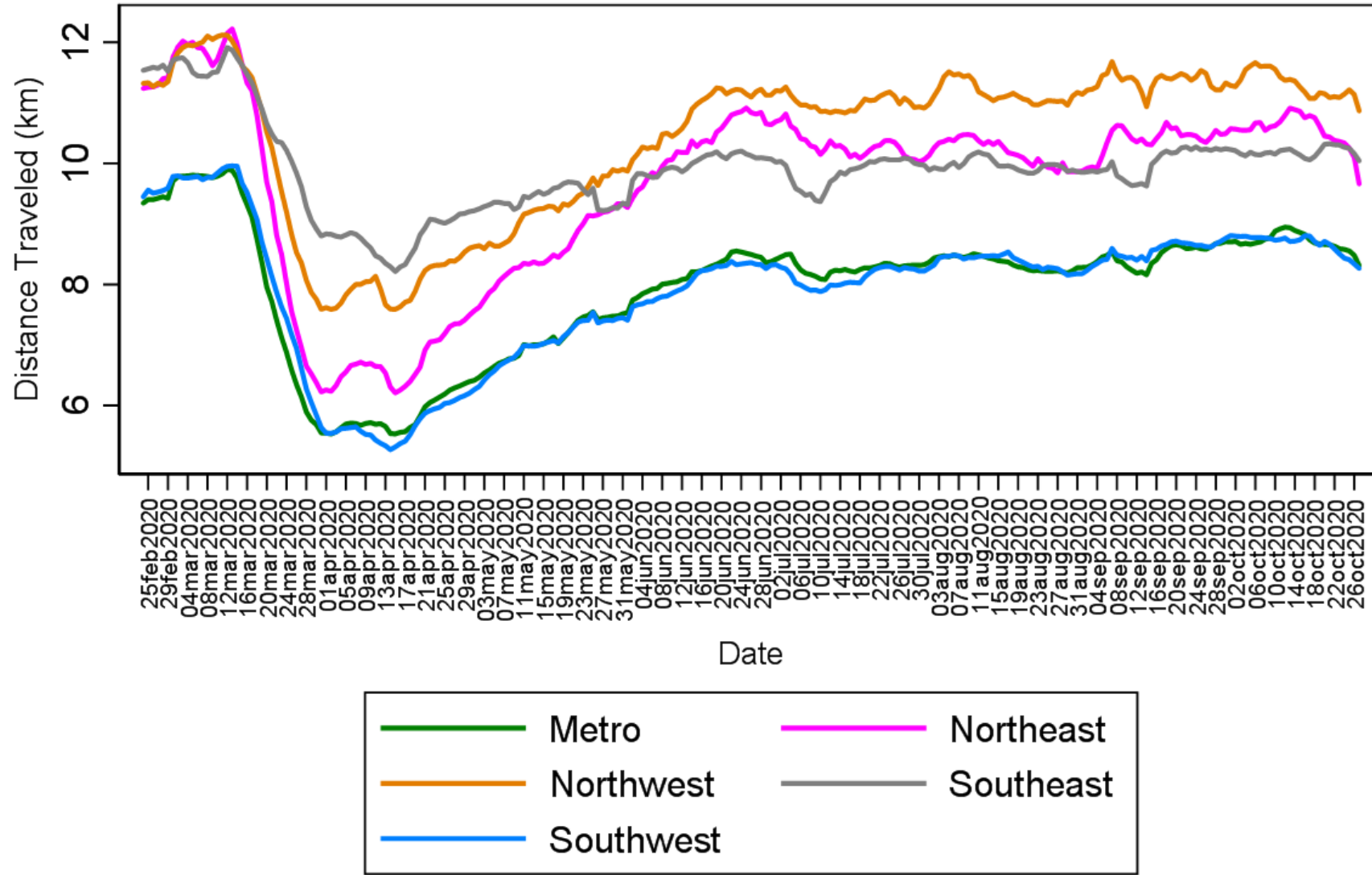
2

Pre-COVID-19 Mean Miles Traveled



Source: Descartes Labs. Prepared by the New Mexico Human Services Department

7-day Average of Mean Distance Traveled by NMDOH Region 10/27/2020



Source: Descartes Labs. Prepared by New Mexico Human Services Department. Regional values are weighted averages using the device sample sizes. Mean calculated using distribution truncated at 80 kilometers

GATING CRITERIA UPDATE

STATEWIDE PUBLIC HEALTH GATING CRITERIA FOR REOPENING

Criterion	Measure	Gating Target	Current Status
Spread of COVID-19	Rate of COVID-19 Transmission (10-day Rolling Average)	1.05 or less	1.11 on 10/28/20
	NM daily cases (7-day rolling average)	168	791 on 10/23/20
Testing Capacity: general and targeted populations*	Number of tests per day (7-day rolling average)	5,000 / day	8,983 on 10/27/20
	Test Positivity Rate (7-day rolling average)	5.0% or less	9.47% on 10/27/20
Contact Tracing and Isolation Capacity	Time from positive test result to: -isolation recommendation for case -quarantine rec. for case contacts	24 hrs	Week ending 10/24 = 47
		36 hrs	Week ending 10/24 = 74
Statewide Health Care System Capacity	Availability of scarce resources in 7 Hub Hospitals: -Adult ICU beds occupied	439 or less	288 on 10/29/20
	-PPE	7-day supply	7 on 10/29/20

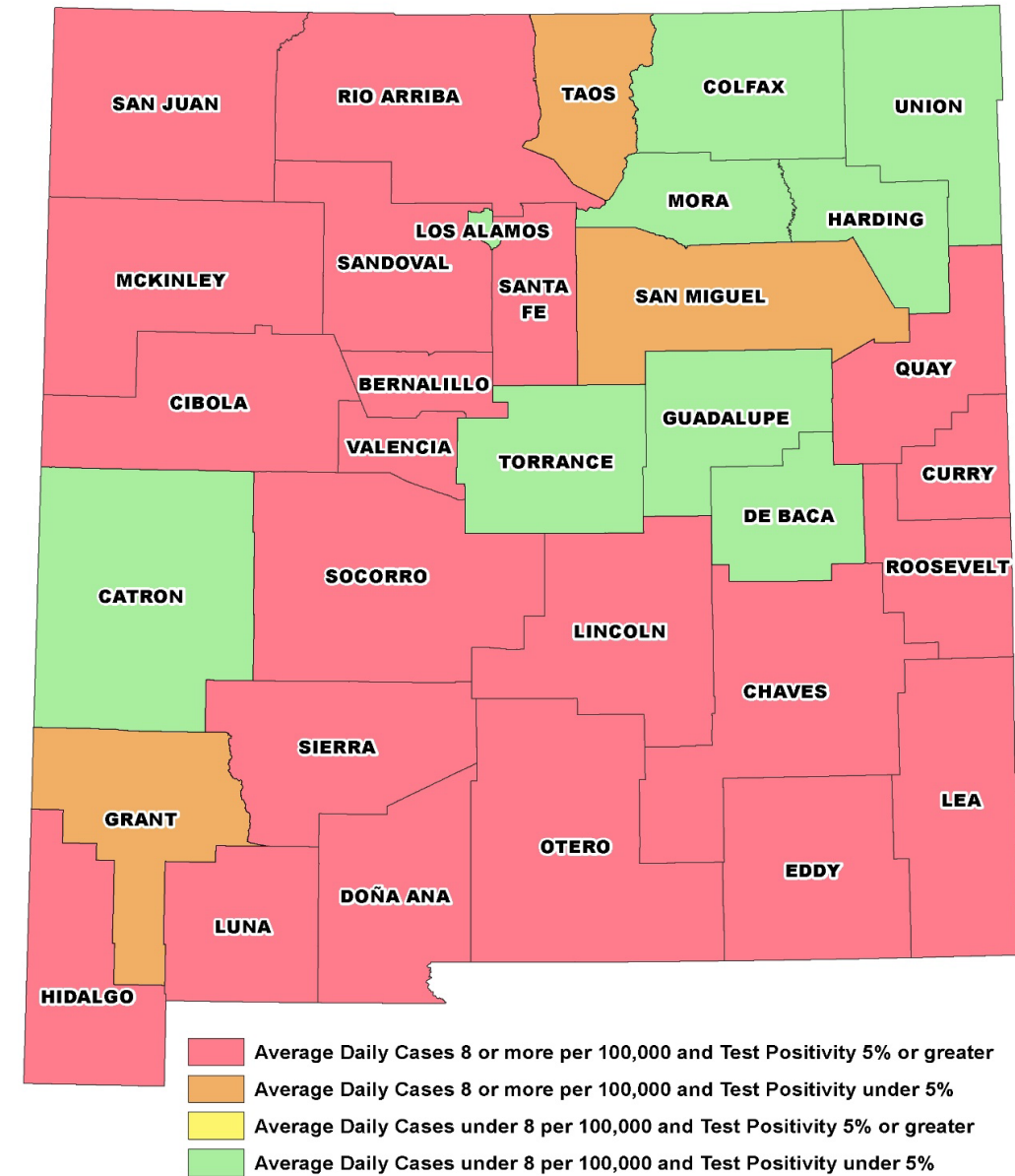
ALL 4 CRITERIA DRIVEN BY SOCIAL DISTANCING BEHAVIORS OF NEW MEXICANS

GET TESTED FOR COVID-19

NMDOH strongly encourages the following groups to get tested for COVID-19:

- Symptomatic people (e.g. cough, fever, shortness of breath, chills, repeated shaking with chills, muscle pain, headache, sore throat, congestion or runny nose, nausea or vomiting, diarrhea, and/or loss of taste or smell);
- Asymptomatic people who are close contacts or household members of people who already tested positive and are in their infectious period;
- Asymptomatic people who live or work in high-risk congregate settings such as long-term care facilities, detention centers and correctional facilities; and,
- Patients who are scheduled for surgery and whose provider has advised them to get tested before the procedure.

NMDOH does not recommend antibody testing to determine if someone is infected with, or protected from getting, COVID-19.

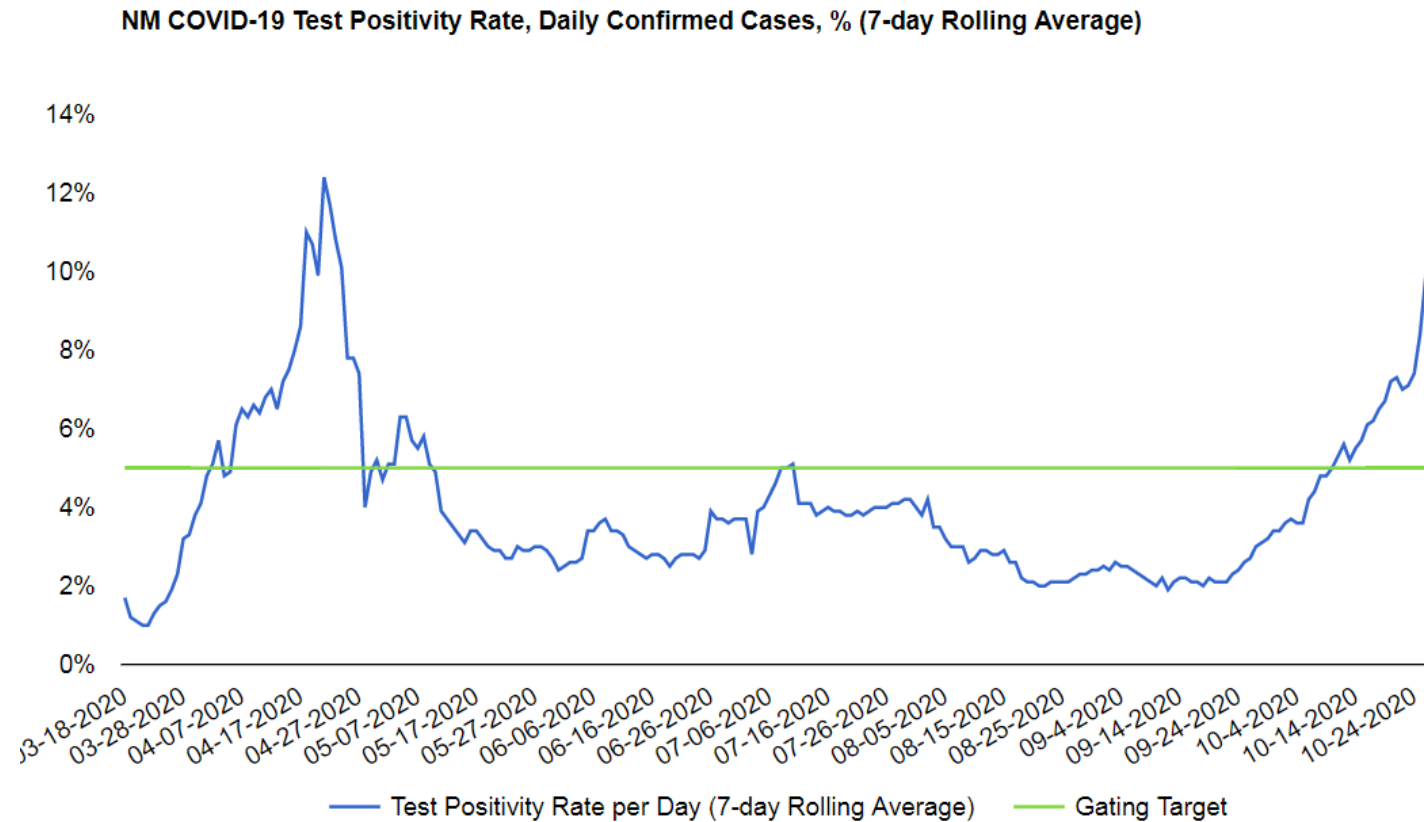


**COVID-19 Average Daily Case Rates by Test Positivity,
New Mexico Counties, October 13 - October 26, 2020**

Population of green counties is 46, 182. (July 2019 estimates).

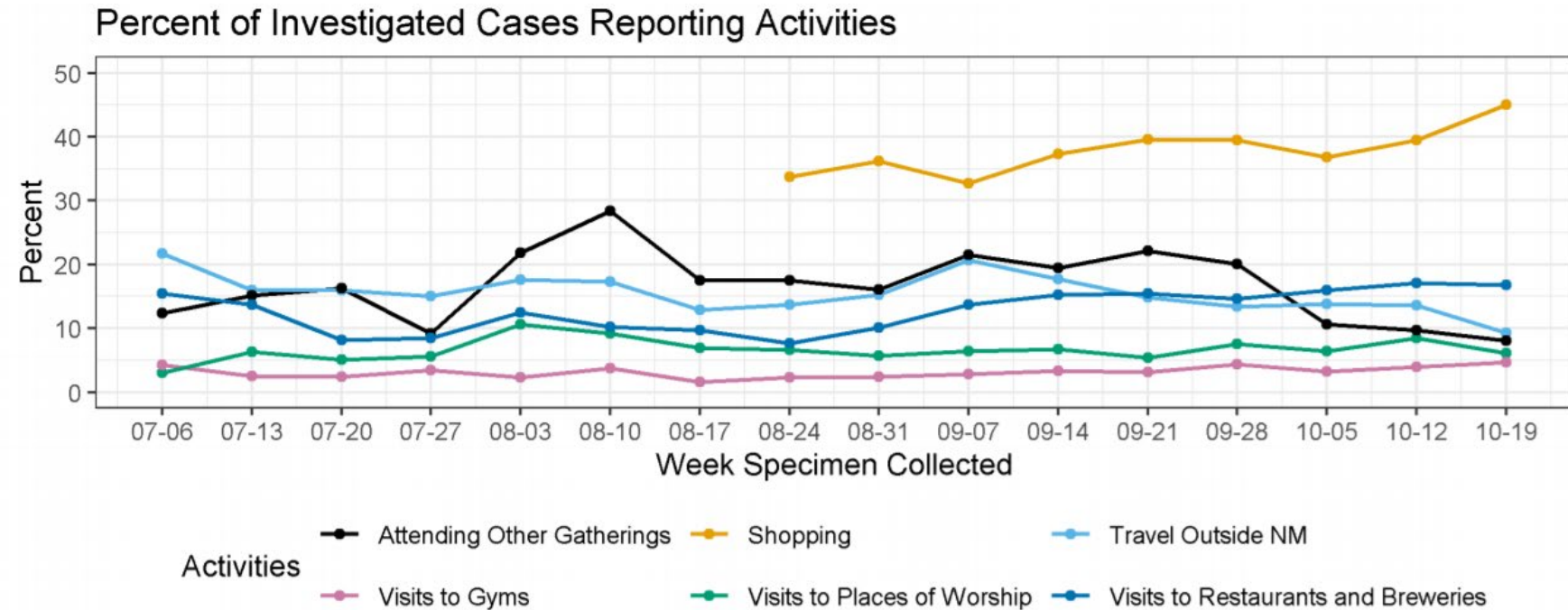
NM COVID-19 TEST POSITIVITY

Date	Tests	Positive Tests	Crude Positivity Rate
10/21	10,848	669	6.2%
10/22	10,334	797	7.7%
10/23	9,611	875	9.1%
10/24	9,749	828	8.5%
10/25	6,078	732	12.0%
10/26	4,497	590	13.1%
10/27	11,763	663	5.6%



ANSWER THE CALL: COVID-19 CONTACT TRACING

- If you get tested for COVID-19, please **self-isolate for 14 days**.
- Attending gatherings and visiting restaurants and bars are the most frequent activities reported by positive cases.



Source: NM Department of Health. Cases in correctional facilities and residents of long-term care facilities were excluded. Percentages are out of cases who were contacted and asked about their exposures 14 days prior to illness onset.

WE MUST DOUBLE DOWN...

Nothing about the virus has changed!

- The rise in cases is due to the significant increase in human to human contact
- We ALL have to recommit to fighting the virus for another year



CASES ARE RISING TOO QUICKLY. CONTACT TRACING EFFECTIVENESS HAS DECLINED. WE ALL STILL MUST FIGHT THE VIRUS.

Stay at home. Seriously! STAY AT HOME.

Wash hands, clean surfaces, cough into tissue/elbow.

Everyone needs to wear face coverings in public. **EVERYONE!**

Maintain social distancing (minimum 6 feet).



HUMAN
SERVICES
DEPARTMENT



QUESTIONS

SECRETARY DAVID R. SCRASE, M.D.

INVESTING FOR TOMORROW, DELIVERING TODAY.